

November 7, 2011

Dear Lisha Kill Parents/Guardians:

On Monday, November 14, the following new traffic pattern for the arrival and dismissal of Lisha Kill Middle School students will be put into effect.

Student Arrival - Drop-off time 7:45 a.m. – 8:30 a.m.

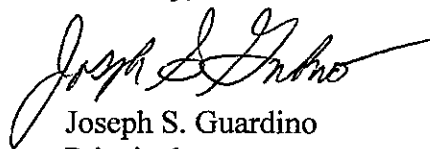
1. Cars dropping off students will enter through the in-bound entrance, go into the circle (single lane) to the student drop-off, continue completely around the circle and exit through the same in-bound entrance.
2. Traffic will flow in two directions at the in-bound entrance of the school during the designated drop-off time.
3. Buses will be lined up along the sidewalk in front of the tennis courts. You will **not** be allowed to use that end of the parking lot while the buses are parked there.
4. Please refer to the enclosed traffic pattern map.

Student Dismissal - Pick-up time 2:45 p.m. -3:10 p.m.

1. Cars picking up students will use the a.m. procedure outlined above for both the 3:00 p.m. and 4:00 p.m. dismissal.
2. The 5:00 p.m. athletic buses will continue to pick up in the circle.
3. Cars will not be allowed to park anywhere in the parking lot prior to or during the drop-off and pick-up times stated above.

This new plan is being put into place for the safety of the Lisha Kill students and to alleviate congestion in the parking lot before and after school. Thank you for your cooperation.

Sincerely,



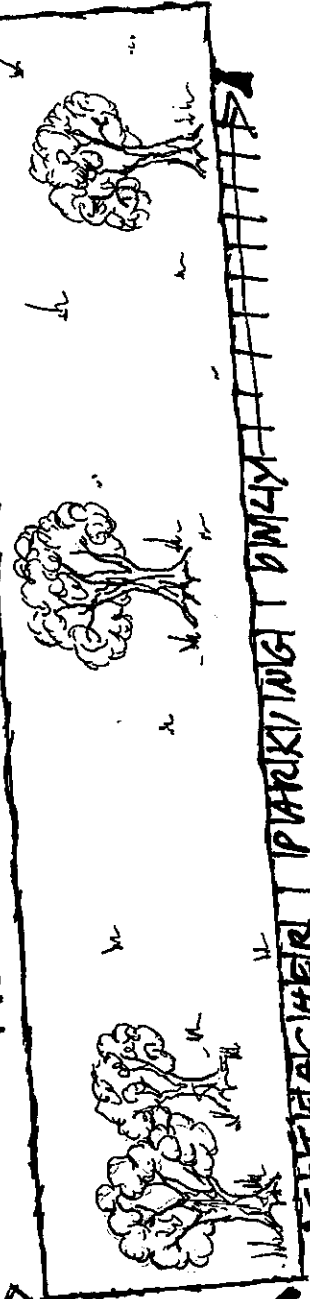
Joseph S. Guardino
Principal

Enclosure

68 Waterman Avenue
Albany, New York 12205-3621
(518) 456-2306 • Fax (518) 452-8165

Our Mission: To foster personal academic success by developing each students abilities and talents in a positive environment that promotes lifelong learning.

Waterman Avenue



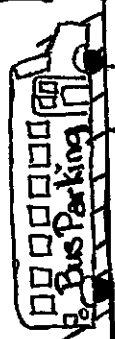
TEACHER PARKING ONLY

EXIT

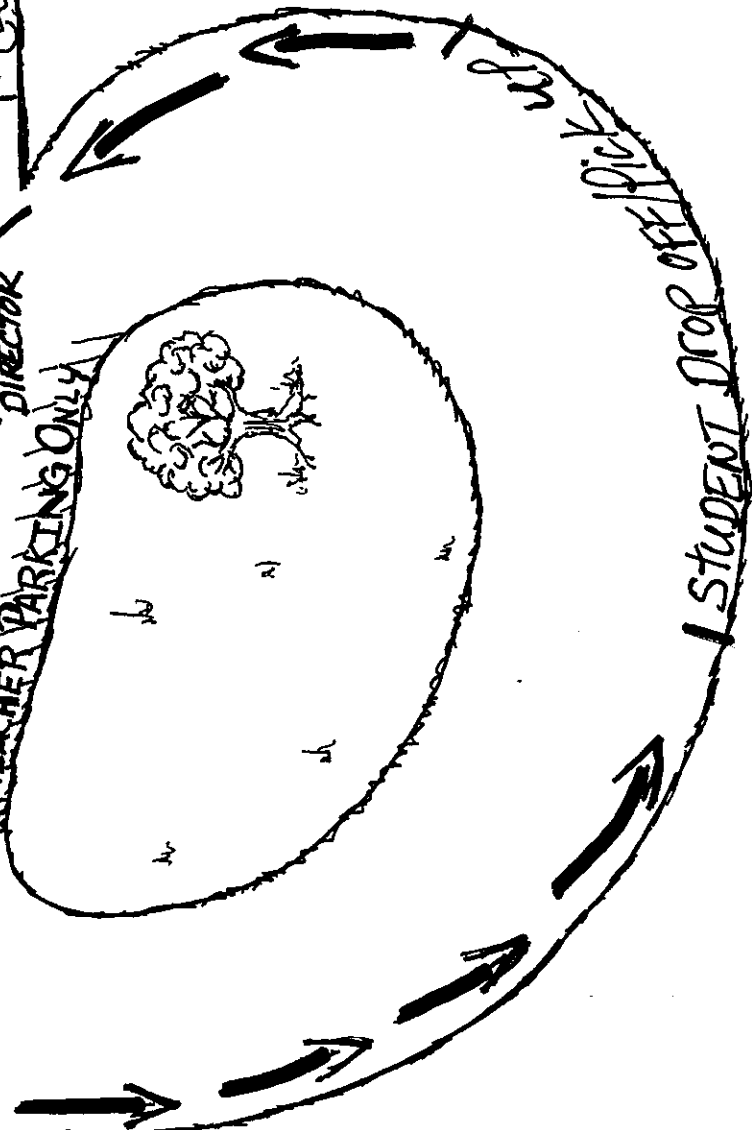
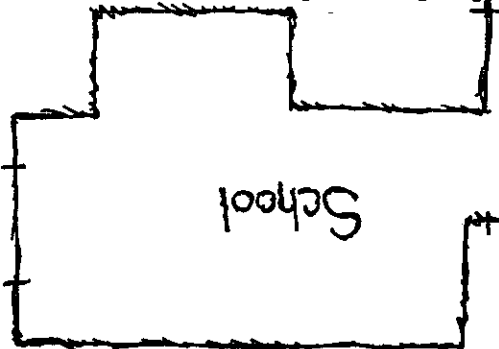
TEACHERS ONLY

TEACHER PARKING ONLY

TRAFFIC DIRECTOR



Tennis Courts



STUDENT DROP OFF/PICK UP